



Road Management Services

Working on behalf of



0300 123 5000

www.nationalhighways.co.uk

17th June 2025

Major Maintenance on A419/A417

We are planning essential maintenance at the A419/A417. The work will affect various sections of the A419/A417. Please note that the remaining sections of the A419/A417 outside of the works area shall operate as usual.

What work is being carried out?

The work being delivered is essential resurfacing of the carriageway on various sections of the A419/A417.

What are the benefits to road users?

Our work reduces interventions, so the road remains open thus reducing delays and improving journey time reliability. Also, it will provide a safer and smoother journey for road users.

When and where will the work be carried out? (Traffic restrictions – check before you travel)

There will be **night closures from 20:00 hours until 06:00 hours the following morning** on the following dates:

A419 Closure between A420 White Hart Roundabout Junction and Turnpike Junction
(Diversion Route 12 Northbound)

- **Night closures ONLY from Wednesday 9th July to Wednesday 16th July** (*excluding Sunday 13th July*)
- **Night closures ONLY from Monday 21st July to Saturday 26th July** (*excluding Wednesday 23rd July and Thursday 24th July*)

The night closures occur from 20:00 hours until 06:00 hours the following morning - e.g. from Wednesday 9th July at 20:00 hours to Thursday 10th July at 06:00 hours

A419 Closure between Turnpike Junction and Spine Road Junction (Diversion Route 14 Northbound)

- **Night closures ONLY from Wednesday 23rd July to Monday 4th August** (*excluding Sunday 3rd August*)
- **Night closures ONLY from Monday 11th August to Thursday 21st August** (*excluding Sunday 17th August*)

The night closures occur from 20:00 hours until 06:00 hours the following morning - e.g. from Wednesday 23rd July at 20:00 hours to Thursday 24th July at 06:00 hours

A419 Closure between Commonhead Junction and A420 White Hart Roundabout (Diversion Route 11 Northbound)

- **Night closure ONLY on Thursday 24th July**
From Thursday 24th July at 20:00 hours to Friday 25th July at 06:00 hours

A419 Closure between Spine Road Junction and Burford Road Interchange (Diversion Route 6 Northbound)


- **Night closure ONLY on Tuesday 5th August**
From Tuesday 5th August at 20:00 hours to Wednesday 6th August at 06:00 hours

The A419/A417 will be fully operational as usual outside of the specified hours. Diversion routes will be signed, and signage will also be in place before the start of works as a reminder.

Property access

Should access to your property be required, traffic management personnel will make every effort to facilitate this. However, some delay may occur while safety measures are implemented to allow safe passage through the work site. A contact number will be provided at the closure entrance for assistance.

Diversion route

The proposed diversion routes for the closures are outlined below. Please refrain from following satellite navigation systems and instead adhere to the signed diversion routes, which correspond to the diversion maps enclosed with this letter and are clearly marked with diversion symbols at the start of the diversion routes (e.g. for Diversion Route 6 Northbound, follow ).

Diversion Route 6 Northbound – A419 Closure between Spine Road Junction and Burford Road Interchange – Tuesday 5th August

From the A419 Northbound Carriageway take the Spine Road Junction exit slip road and then take the 2nd exit at the roundabout signed Cirencester, Stroud A419.

At 2nd roundabout take the 1st exit continuing on the A419 Northbound.

At 3rd roundabout take the 2nd exit signed Cirencester A419.

At 4th roundabout take the 3rd exit Cirencester A419, Cheltenham (A435), Motorway (M5), Gloucester (A417), Stow (A429).

At 5th roundabout take the 3rd exit signed Stow A429, Burford (B4425), Lechlade (A417).

At 6th roundabout take the 1st exit signed (M5), Gloucester A417 onto entry slip road to A417 Northbound Carriageway.

Diversion Route 11 Northbound – A419 Closure between Commonhead Junction and A420 White Hart Roundabout Junction – Thursday 24th July

From the Commonhead northbound exit slip take the 1st exit at the Commonhead roundabout signed Swindon A4259.

At Coate Roundabout take 3rd exit onto Queens Drive signed town centre A4259.

At Drakes roundabout take 2nd exit onto Drakes Way Signed Burford (A361).

At Greenbridge roundabout take 3rd exit onto Slade Drive signed Oxford (A420).

At White Hart roundabout 5th exit signed Cirencester (A419N).

At island 1st exit onto slip signed Cirencester A419.

Diversion Route 12 Northbound – A419 Closure between A420 White Hart Roundabout Junction and Turnpike Junction – Wednesday 9th July to Wednesday 16th July and Monday 21st July to Saturday 26th July

From the A419, exit at the A420 Northbound Exit Slip and then take the 2nd exit at the first roundabout signed A4312.

At White Hart roundabout take the 1st exit on to the Oxford Road signed Swindon, Dorcan and Stratton.

At Lady Margaret Traffic Lights continue forward signed A4312 Town Centre.

At Greenbridge roundabout take the 4th exit signed Highworth (A361), Cirencester (A419).

At the New Inn roundabout take the 1st exit onto Bridge End Road signed Elgin B4143.

At Gypsy Lane roundabout take 2nd exit onto Gypsy Lane signed Elgin B4143.

At next roundabout take 2nd exit onto Gypsy Lane signed Gorsehill.

At Chapel roundabout take 3rd exit signed Cirencester A4311 (A419).

At Elgin Drive roundabout take 1st exit signed Cirencester A4311 (A419).

At Kembrey Park roundabout take 2nd exit signed Cirencester (A419).

At Headlands roundabout take 1st exit signed Cirencester A4311 (A419).

At Moonrakers roundabouts take 2nd then 1st exits onto Cricklade Road signed Cirencester A4311 (A419), through next set of traffic Lights then follow on to Arkwright Junction.

At Arkwright Traffic Lights, follow straight on signed (A419) Cirencester.

At the next set of Traffic Lights, merge to the right and follow signs for (A419) Cirencester.

Then at next set of Traffic Lights, stay in right hand lane and Re-Join (A419) Cirencester.

Diversion Route 14 Northbound – A419 Closure between Turnpike Junction and Spine Road Junction – Wednesday 23rd July to Monday 4th August and Monday 11th August to Thursday 21st August

From the Turnpike Northbound Exit Slip merge to the left, signed Swindon N&W A4311.

At 1st set of Traffic Lights continue onto Cricklade Road A4311, stay right.

At 2nd set of Traffic Lights continue straight onto Thamesdown Drive A4311, signed West Swindon.

At 3rd set of Traffic Lights continue straight on.

At 4th set of Traffic Lights continue straight on.

At 5th set of Traffic Lights continue straight on.

At 6th set of Traffic Lights continue straight on.

At 7th set of Traffic Lights continue straight on.

At 8th set of Traffic Lights continue straight on.

At 9th set of Traffic Lights continue straight on.

At 10th set of Traffic Lights continue straight on.

At Sparcells roundabout, take 2nd exit, signed M4, Hillmead, B4534.

At next roundabout take 2nd exit, signed M4, Hillmead, B4534.

At next roundabout take 1st exit, signed M4, Hillmead, B4534.

At next roundabout take 2nd exit signed M4, Shaw, B4534.

At next roundabout take 2nd exit to continue on B4534.

At next roundabout take 2nd exit signed M4, Town Centre, Westmead, Westlea, B4006.

At next roundabout take 3rd exit signed M4, Town Centre, Toothill, B4006.

At next roundabout take 2nd exit signed M4, Royal W. Bassett, Windmill, Blagrove, A3102.

At next roundabout take 2nd exit signed M4, Royal W. Bassett, A3102.

At next roundabout take 2nd exit signed M4 West.

At next roundabout take 2nd exit to continue on A3102.

At next roundabout take 2nd exit signed Malmesbury, Brinkworth, Cricklade, Ashton Keynes B4042.

Continue to Royal Wootton Bassett using the B4042 and travel to Ashton Keynes using the B4696.

Continue along B4696 onto entry slip road to A419 Northbound Carriageway.

Contact

Fatima Alawad (Stakeholder Support Manager)

Email: Fatima.Alawad@wsp.com

Yours sincerely,

A handwritten signature in black ink, appearing to read 'M Jackson', is centered on a light yellow rectangular background.

Mike Jackson
Road Manager

Enc. Diversion Route Map

ROUTE 6

A417 Northbound Closed
Between
Spine Road Junction
And
Burford Road Interchange



CLOSED BETWEEN BURFORD ROAD INTERCHANGE AND SOUTH CERNLEY JUNCTION

A419/A417 NORTHBOUND

Diversion Route
Symbol



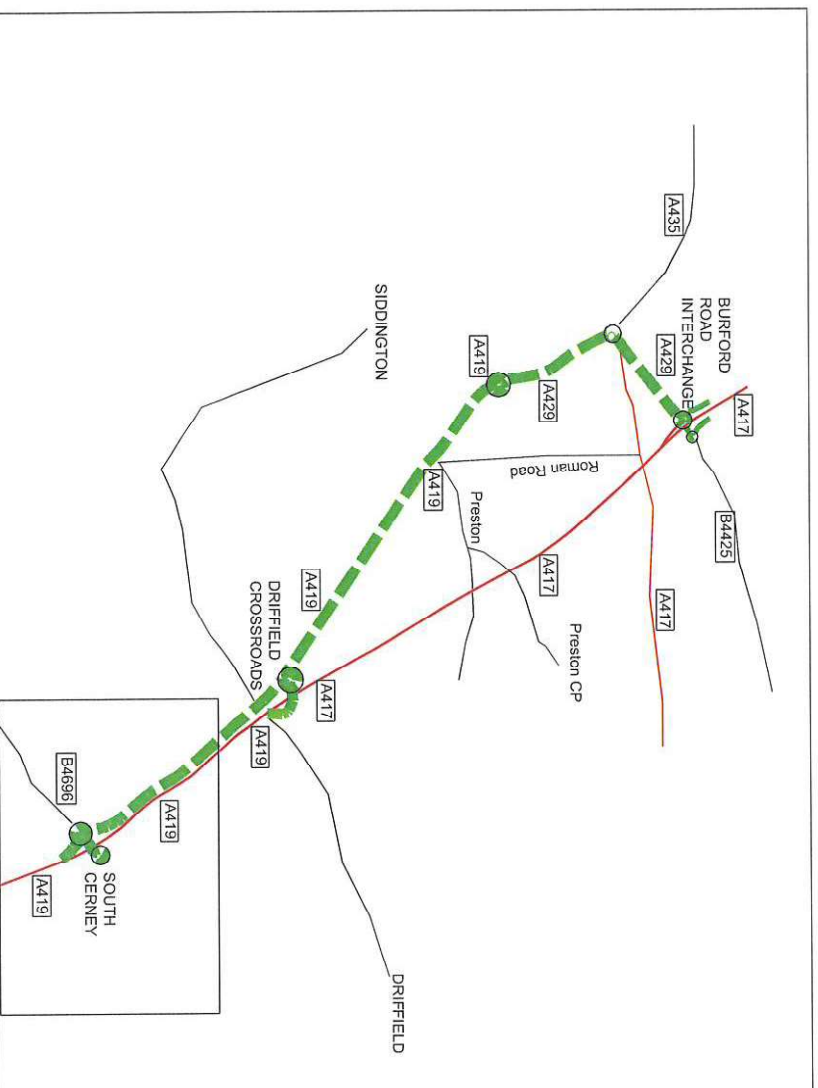
Action Points

Step 1: Close A419/A417 Northbound carriageway at Cernley junction.
Step 2: Open trigger signs at South Cernley junction Exit Slip Road.
Reverse procedure at end of closure.

A417 Northbound Carriageway at South Cernley

Northbound Exit Slip Road.

Standard Road Closure to TMC requirements



This route was agreed as the preferred option by the following parties during 2007:
Highways Agency, R.M.S., Gloucestershire Police and Gloucester County Council

HA HIGHWAYS
AGENCY

mouchel

Diversion Route 6 (Northbound)
Oct 2008

ROUTE 11

**A419 Northbound Closed
Between
Commonhead Roundabout
And
White Hart Roundabout**



A419 NORTHBOUND

CLOSED BETWEEN COMMONHEAD ROUNDABOUT AND WHITE HART ROUNDABOUT.



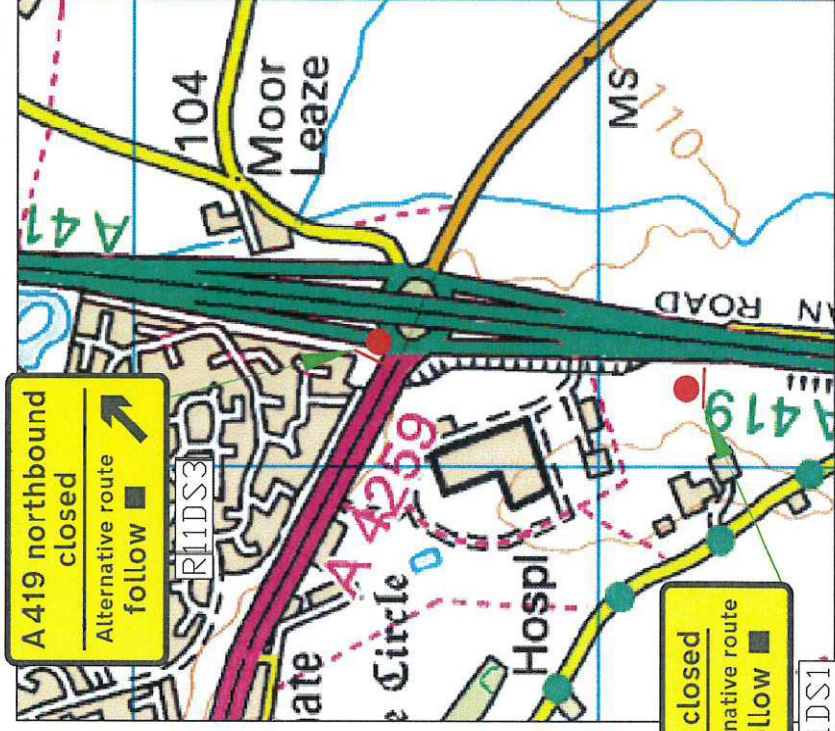
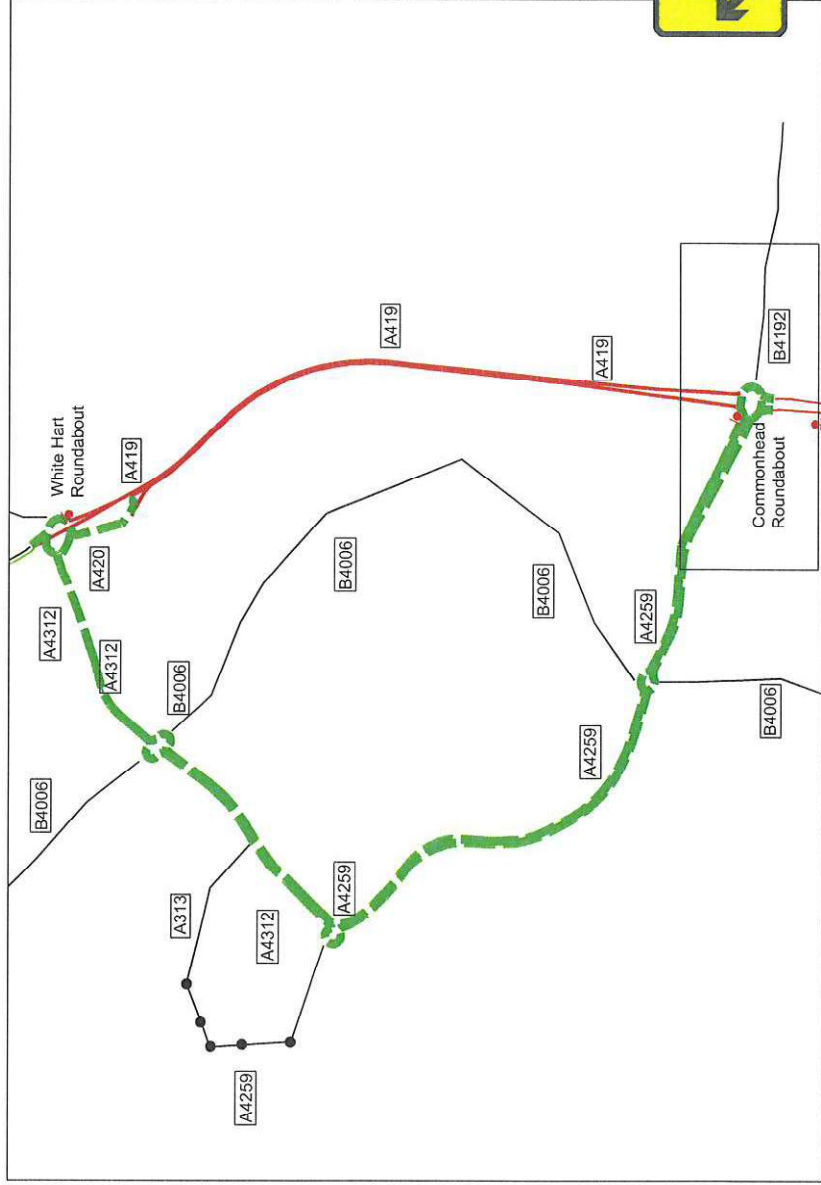
Diversion Route
Symbol

Action Points

- Step 1: Close A419 at Northbound carriageway at Commonhead roundabout junction with A4259.
- Step 2: Open trigger signs at Commonhead roundabout Northbound Exit Slip Road.
- Reverse procedure at end of closure.

A419 Northbound Carriageway at Commonhead Roundabout.

Standard Road Closure to TMC requirements



This route was agreed as the preferred option by the following parties during 2007:
Highways Agency, R.M.S. Gloucestershire Police and Gloucester County Council

HA HIGHWAYS
AGENCY

mouchel

Version
A
Diversion Route 11 (Northbound)
Date
Oct 2008

ROUTE 12

**A419 Northbound Closed
Between
A420 White Hart Roundabout
And
Turnpike Junction**



A419 NORTHBOUND

CLOSED BETWEEN WHITE HART ROUNDABOUT AND TURNPIKE JUNCTION.



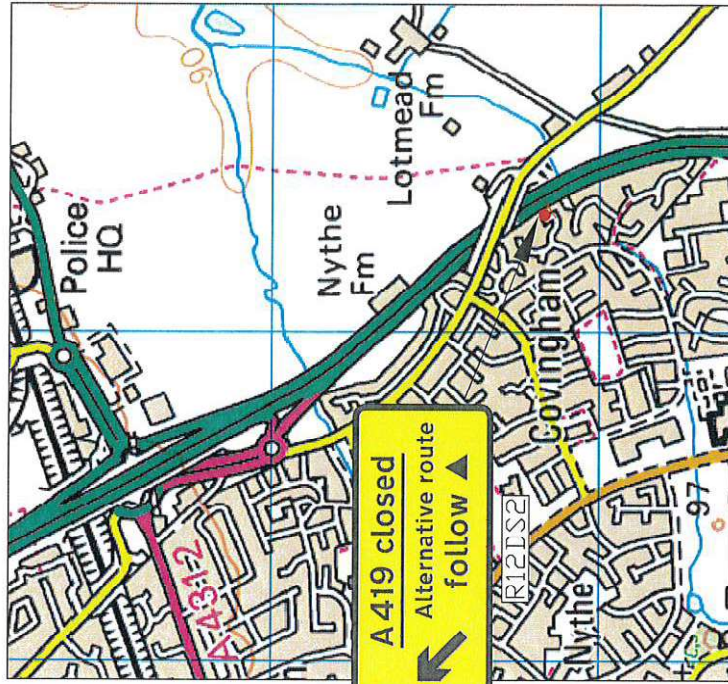
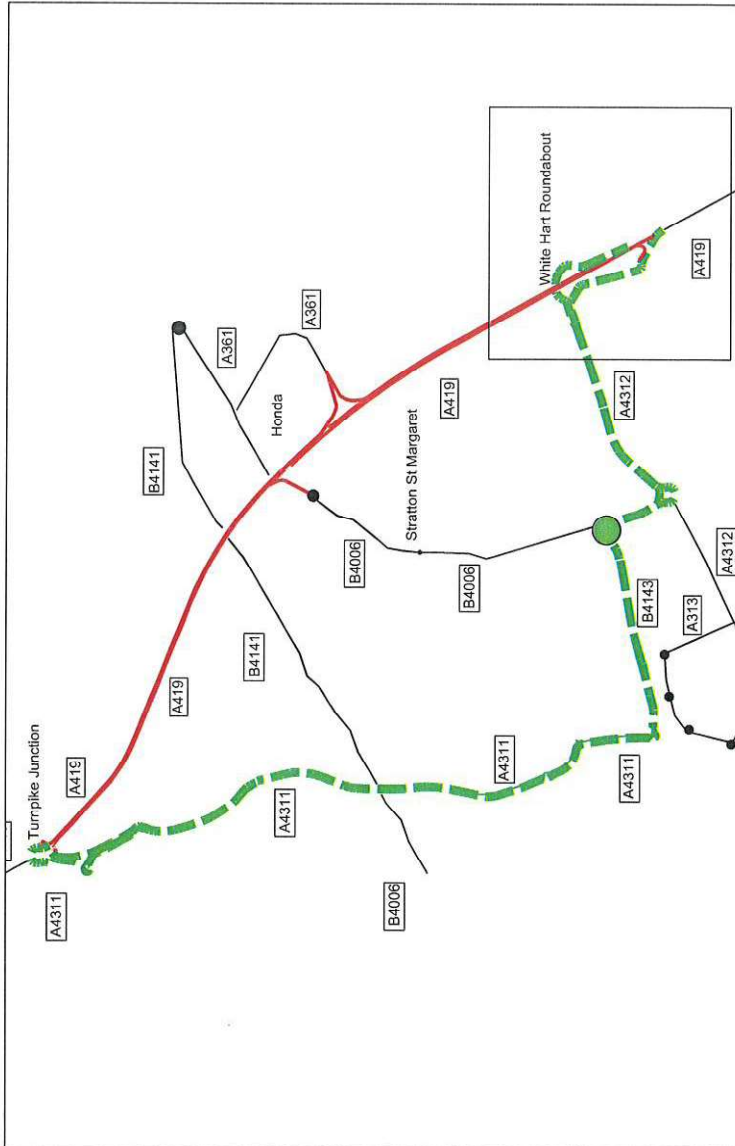
Diversion Route
Symbol

Action Points

- Step 1: Close A419 at Northbound carriageway at White Hart Roundabout junction with A420.
- Step 2: Open trigger signs at White Hart Northbound Exit Slip Road.
- Reverse procedure at end of closure.

A419 Northbound Carriageway at White Hart Roundabout.

Standard Road Closure to TMC requirements



This route was agreed as the preferred option by the following parties during 2007:
Highways Agency, R.M.S. Wiltshire Police and Wiltshire County Council

HA HIGHWAYS AGENCY

mouchel

Diversion Route 12 (Northbound)
B
Dec 2008

ROUTE 14

A419 Northbound Closed
Between
Turnpike Junction
And
Spine Road Junction



A419 NORTHBOUND

CLOSED BETWEEN TURNPIKE JUNCTION AND SPINE

ROAD JUNCTION

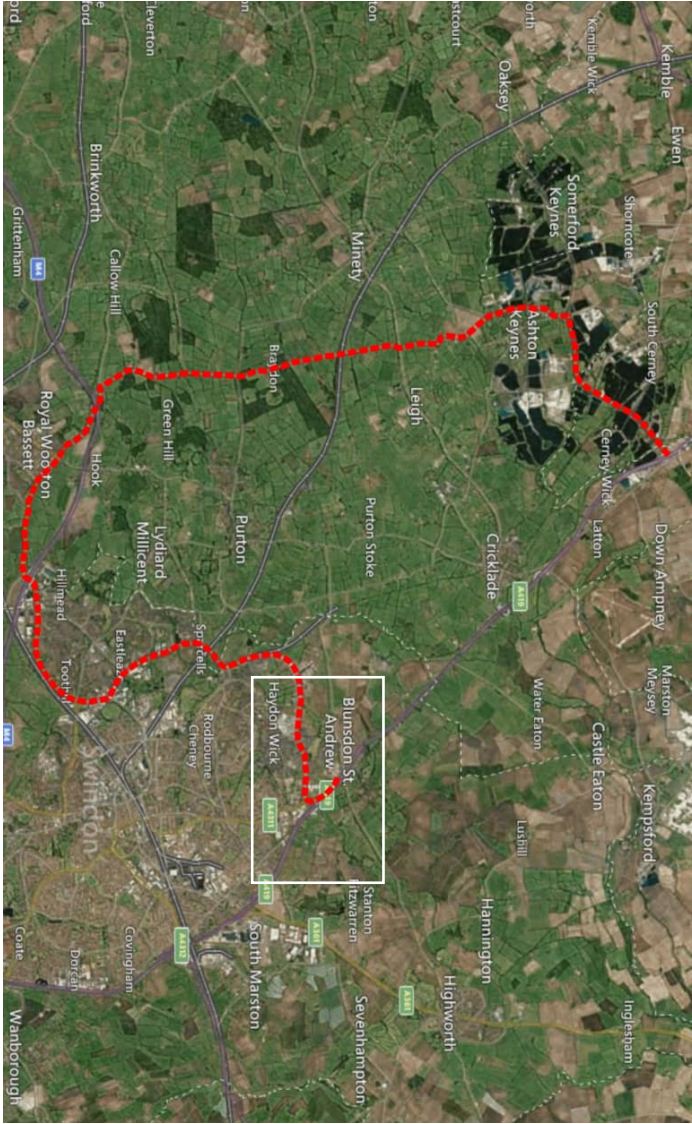
Diversion Route
Symbol



Action Points

- Step 1: Close A419 Northbound carriageway at Turnpike Junction with A4311.
- Step 2: Open trigger signs at Turnpike Junction Northbound Exit Slip Road.
- Reverse procedure at end of closure.

Standard Road Closure to TMC requirements



This route was agreed as the preferred option by the following parties during 2007:
Highways Agency, R.M.S. Gloucestershire Police and Gloucester County Council



Diversion Route 14 (Northbound)
Aug 2024