



Road Management Services

Working on behalf of



0300 123 5000
www.nationalhighways.co.uk

21st May 2025

Major Maintenance on A419/A417

We are planning bridge painting works on the A419/A417 at Marston Meysey bridge (located between Turnpike/Lady Lane junction and Spine Road junction) and Commonhead bridge (located at Commonhead junction). Please note that the remaining sections of the A419/A417 outside of the works area shall operate as usual.

What work is being carried out?

The bridge painting work is required to prolong the lifespan of the structure. This treatment will prevent water ingress into the bridge, which ensures the structure remain safe for use. Without this treatment, water ingress may cause significant damage which would require more disruptive repairs in future.

What are the benefits to road users?

Our work reduces interventions, so the road remains open thus reducing delays and improving journey time reliability. Also, it will provide a safer and smoother journey for road users.

When and where will the work be carried out? (Traffic restrictions – check before you travel)

There will be **night closures from 20:00 hours until 06:00 hours the following morning** on the following dates:

- **A419 Closure between Commonhead Junction and A420 White Hart Roundabout (Diversion Route 11 Northbound and Southbound) – Saturday 31st May to Thursday 26th June** (*excluding Monday 2nd June, Tuesday 3rd June, Wednesday 4th June, Thursday 5th June, Saturday 21st June, Sunday 22nd June*)
- **A419 Closure between Turnpike Junction and Spine Road Junction (Diversion Route 14 Northbound) – Saturday 31st May to Tuesday 10th June** (*excluding Saturday*

7th and Sunday 8th of June)

- **A419 Closure between Spine Road Junction and Lady Lane Junction (Diversion Route 14 Southbound) – Wednesday 11th June to Tuesday 8th July** (excluding Saturday 21st June, Sunday 22nd June, Sunday 6th July)


Please note the closures utilising Diversion Route 14 will redirect traffic through Ashton Keynes, where the narrow roads may present difficulties for vehicular movement, especially for larger vehicles so please carefully plan your journey beforehand to prevent delays.

The A419/A417 will be fully operational as usual outside of the specified hours. Diversion routes will be signed, and signage will also be in place before the start of works as a reminder.

Property access

Should access to your property be required, traffic management personnel will make every effort to facilitate this. However, some delay may occur while safety measures are implemented to allow safe passage through the work site. A contact number will be provided at the closure entrance for assistance.

Diversion route

The proposed diversion route for the closure is outlined below. Please refrain from following satellite navigation systems and instead adhere to the signed diversion route, which corresponds to the diversion map enclosed with this letter and is clearly marked with diversion symbols at the start of the diversion route (e.g. for Diversion Route 14 Northbound, follow ).

Diversion Route 11 Northbound – A419 Closure between Commonhead Junction and A420 White Hart Roundabout Junction – Saturday 31st May to Thursday 26th June

From the Commonhead northbound exit slip take the 1st exit at the Commonhead roundabout signed Swindon A4259.

At Coate Roundabout take 3rd exit onto Queens Drive signed town centre A4259.

At Drakes roundabout take 2nd exit onto Drakes Way Signed Burford (A361).

At Greenbridge roundabout take 3rd exit onto Slade Drive signed Oxford (A420).

At White Hart roundabout 5th exit signed Cirencester (A419N).

At island 1st exit onto slip signed Cirencester A419.

Diversion Route 11 Southbound – A419 Closure between A420 White Hart Roundabout Junction and Commonhead Junction – Saturday 31st May to Thursday 26th June

From the White Hart Southbound Exit Slip roundabout take the 4th exit onto Oxford Road signed Town Centre A4312.

At Greenbridge roundabout take the 2nd exit onto Drakes Way signed Town Centre A4312.

At Drakes roundabout take 1st exit onto Queens Drive signed Walcot E A4259.

At Coate roundabout take 3rd exit onto Marlborough Road signed Marlborough A4259.

At Commonhead roundabout take 4th exit signed Motorway M4.

Diversion Route 14 Northbound – A419 Closure between Turnpike Junction and Spine Road Junction – Saturday 31st May to Tuesday 10th June

From the Turnpike Northbound Exit Slip merge to the left, signed Swindon N&W A4311.

At 1st set of Traffic Lights continue onto Cricklade Road A4311, stay right.

At 2nd set of Traffic Lights continue straight onto Thamesdown Drive A4311, signed West Swindon.

At 3rd set of Traffic Lights continue straight on.

At 4th set of Traffic Lights continue straight on.

At 5th set of Traffic Lights continue straight on.

At 6th set of Traffic Lights continue straight on.

At 7th set of Traffic Lights continue straight on.

At 8th set of Traffic Lights continue straight on.

At 9th set of Traffic Lights continue straight on.

At 10th set of Traffic Lights continue straight on.

At Sparcells roundabout, take 2nd exit, signed M4, Hillmead, B4534.

At next roundabout take 2nd exit, signed M4, Hillmead, B4534.

At next roundabout take 1st exit, signed M4, Hillmead, B4534.

At next roundabout take 2nd exit signed M4, Shaw, B4534.

At next roundabout take 2nd exit to continue on B4534.

At next roundabout take 2nd exit signed M4, Town Centre, Westmead, Westlea, B4006.

At next roundabout take 3rd exit signed M4, Town Centre, Toothill, B4006.

At next roundabout take 2nd exit signed M4, Royal W. Bassett, Windmill, Blagrove, A3102.

At next roundabout take 2nd exit signed M4, Royal W. Bassett, A3102.

At next roundabout take 2nd exit signed M4 West.

At next roundabout take 2nd exit to continue on A3102.

At next roundabout take 2nd exit signed Malmesbury, Brinkworth, Cricklade, Ashton Keynes B4042.

Continue to Royal Wootton Bassett using the B4042 and travel to Ashton Keynes using the

B4696.

Continue along B4696 onto entry slip road to A419 Northbound Carriageway.

Diversion Route 14 Southbound – A419 Closure between A419 Closure between Spine Road Junction and Lady Lane Junction – Wednesday 11th June to Tuesday 8th July

From the A419 Southbound Carriageway take the Spine Road Junction exit slip road.

At 1st roundabout take 4th exit to travel along the B4696 Spine Road.

At the 2nd roundabout take the 2nd exit to continue travelling along the B4696 Spine Road East to Aston Keynes.

Continue to Royal Wootton Bassett using the B4042.

At 3rd roundabout take 2nd exit signed M4, Swindon, Interface, Woodshaw, A3102.

At 4th roundabout take 1st exit signed M4, Swindon, A3102.

At 5th roundabout take 2nd exit signed Swindon, A3102.

At 6th roundabout take 2nd exit signed Town Centre, A3102.

At 7th roundabout take 2nd exit signed Great Western, North Star, Stratton, B4006.

At 8th roundabout take 1st exit to continue on B4006.

At 9th roundabout take 2nd exit signed Cirencester A419, Shaw, Hillmead.

At 10th roundabout take 2nd exit signed Cirencester A419, Hillmead, B4534.

At 11th roundabout take 2nd exit signed Cirencester A419, Sparcells, B4534.

At 12th roundabout take 2nd exit to continue on B4534.

At 13th roundabout take 2nd exit signed Cirencester A419, North Swindon, B4534.

At 14th roundabout take 2nd exit signed Cirencester A419, North Swindon, Blunsdon, B4534.

Continue along B4534 onto entry slip road to A419 Southbound Carriageway.

Contact

Fatima Alawad (Stakeholder Support Manager)

Email: Fatima.Alawad@wsp.com

Yours sincerely,



Mike Jackson
Road Manager

Enc. Diversion Route Map

ROUTE 11

**A419 Northbound Closed
Between
Commonhead Roundabout
And
White Hart Roundabout**



A419 NORTHBOUND

CLOSED BETWEEN COMMONHEAD ROUNDABOUT AND WHITE HART ROUNDABOUT.



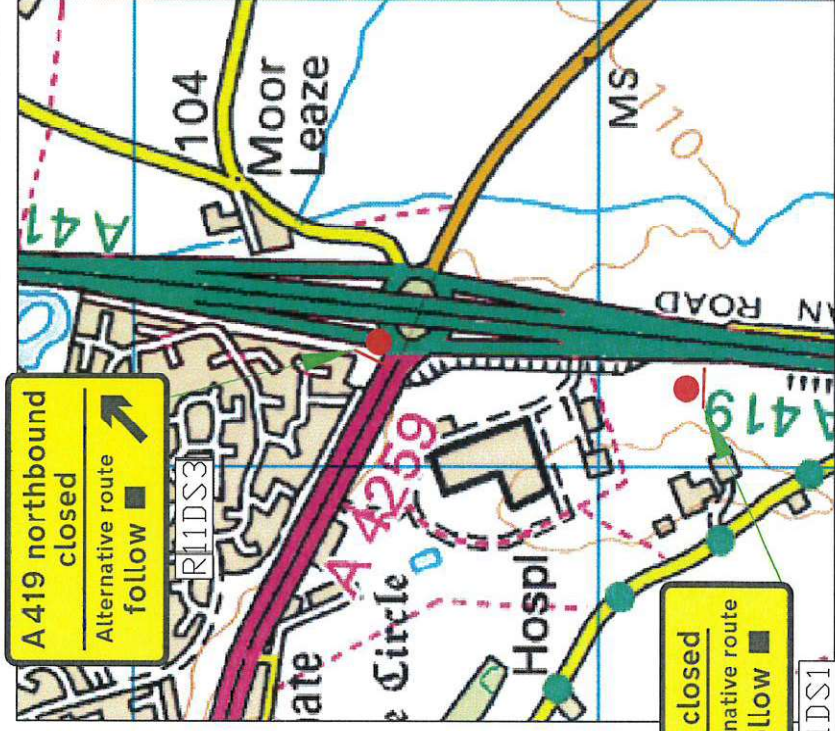
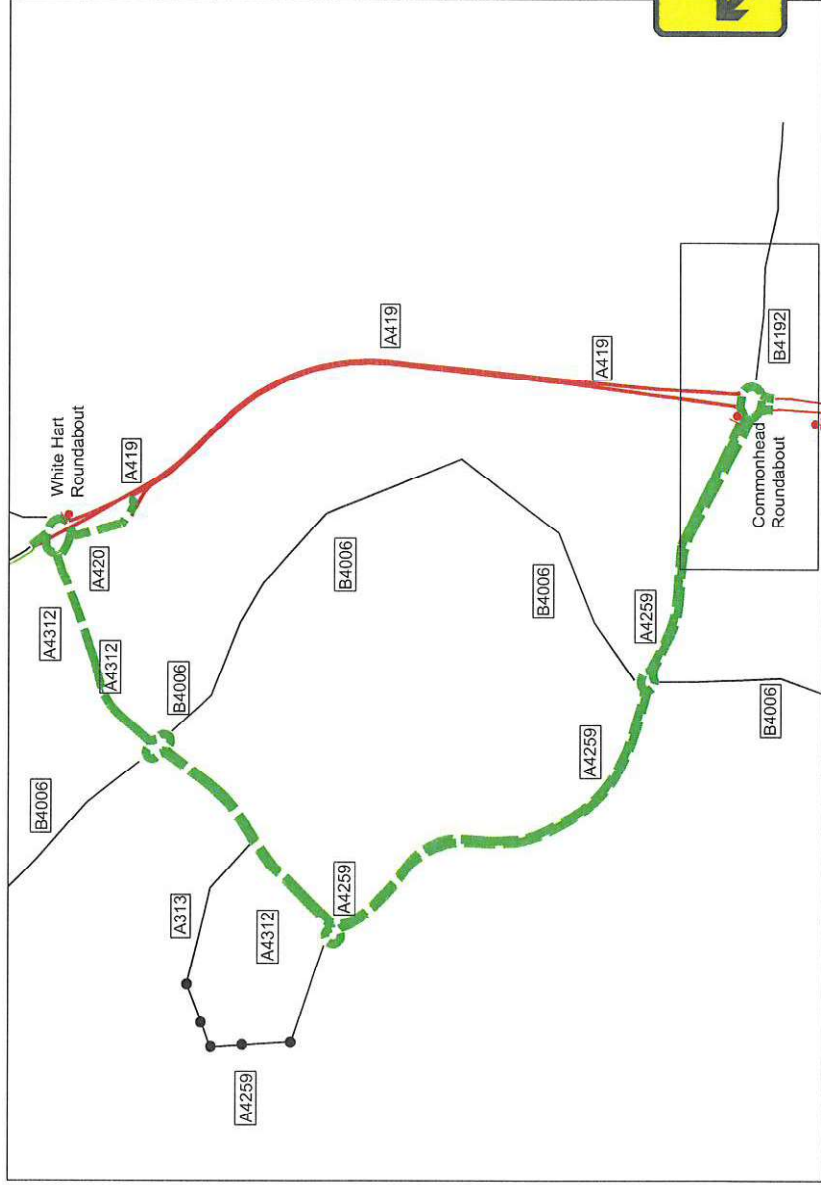
Diversion Route
Symbol

Action Points

- Step 1: Close A419 at Northbound carriageway at Commonhead roundabout junction with A4259.
- Step 2: Open trigger signs at Commonhead roundabout Northbound Exit Slip Road.
- Reverse procedure at end of closure.

A419 Northbound Carriageway at Commonhead Roundabout.

Standard Road Closure to TMC requirements



This route was agreed as the preferred option by the following parties during 2007:
Highways Agency, R.M.S. Gloucestershire Police and Gloucester County Council

HA HIGHWAYS
AGENCY

mouchel

Version
A
Diversion Route 11 (Northbound)
Date
Oct 2008

ROUTE 11

**A419 Southbound Closed
Between
White Hart Roundabout
And
Commonhead Roundabout**



A419 SOUTHBOUND

CLOSED BETWEEN WHITE HART ROUNDABOUT AND COMMONHEAD ROUNDABOUT.



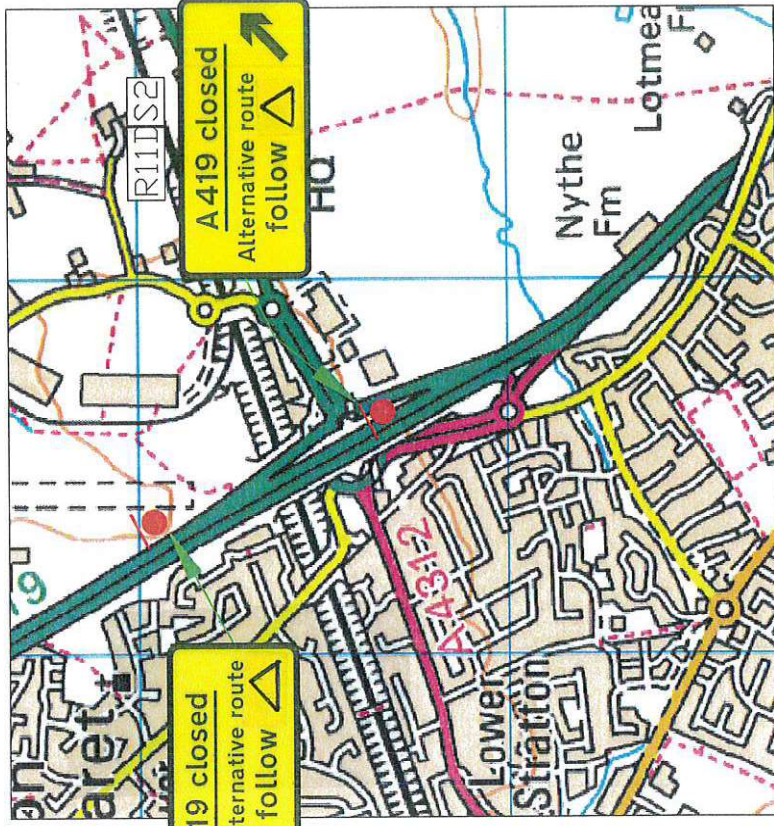
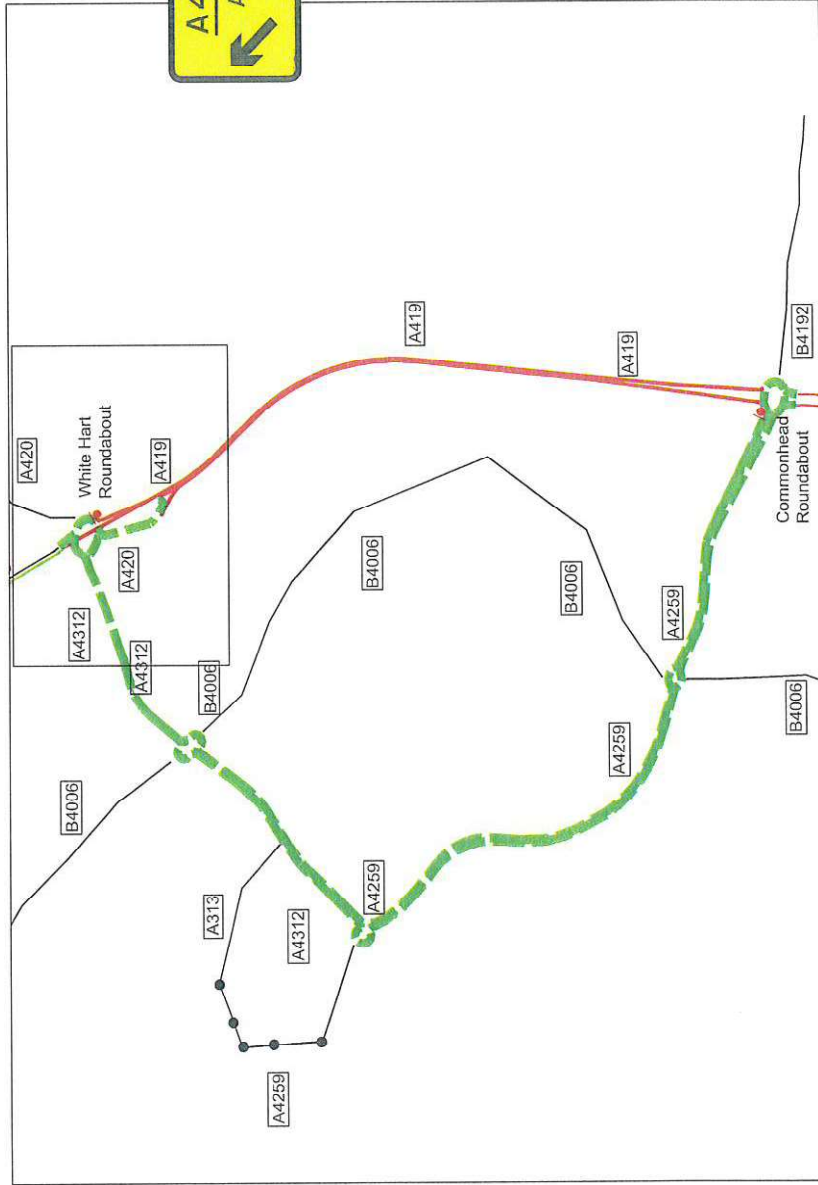
Diversion Route
Symbol

Action Points

Step 1: Close A419 at Southbound carriageway at White Hart roundabout junction with A419/A4312.
Step 2: Open trigger signs at White Hart roundabout Southbound Exit Slip Road.
Reverse procedure at end of closure.

A419 Southbound Carriageway at White Hart Roundabout.

Standard Road Closure to TMC requirements



This route was agreed as the preferred option by the following parties during 2007:
Highways Agency, R.M.S. Gloucestershire Police and Gloucester County Council

HA HIGHWAYS
AGENCY

mouchel

Diversion Route 11 (Southbound)
A
Oct 2008

ROUTE 14

A419 Northbound Closed
Between
Turnpike Junction
And
Spine Road Junction



A419 NORTHBOUND

CLOSED BETWEEN TURNPIKE JUNCTION AND SPINE

ROAD JUNCTION

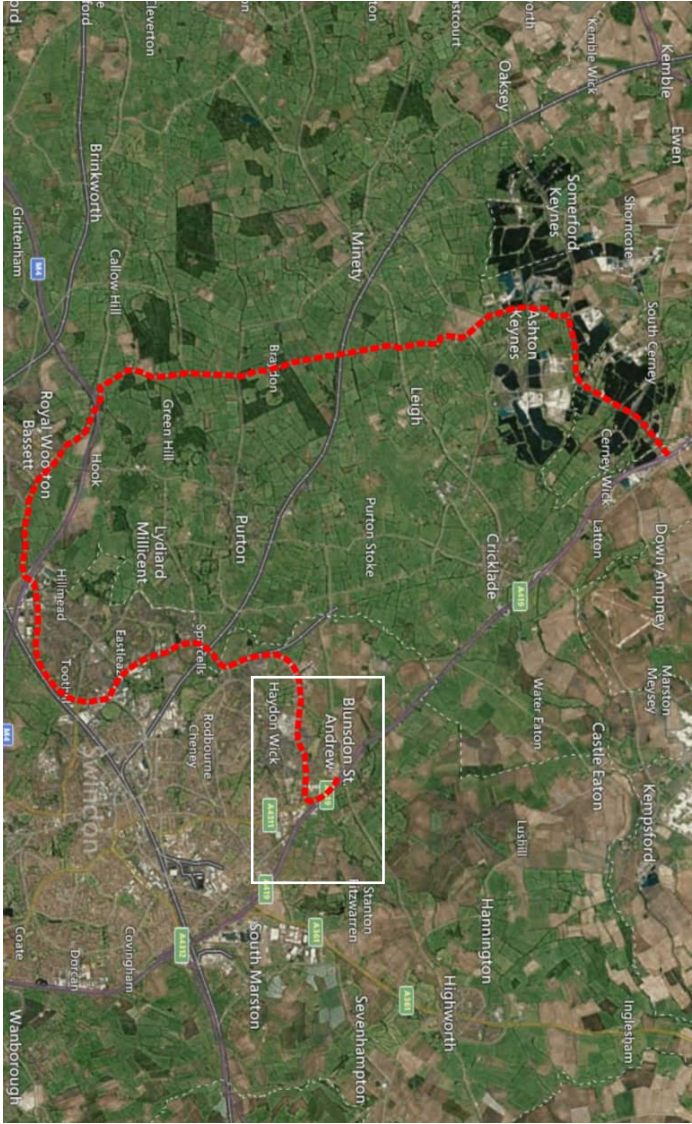
Diversion Route
Symbol



Action Points

- Step 1: Close A419 Northbound carriageway at Turnpike Junction with A4311.
- Step 2: Open trigger signs at Turnpike Junction Northbound Exit Slip Road.
- Reverse procedure at end of closure.

Standard Road Closure to TMC requirements



This route was agreed as the preferred option by the following parties during 2007:
Highways Agency, R.M.S. Gloucestershire Police and Gloucester County Council



Diversion Route 14 (Northbound)
Aug 2024

ROUTE 14

A419 Southbound Closed
Between
Spine Road Junction
And
Lady Lane Junction



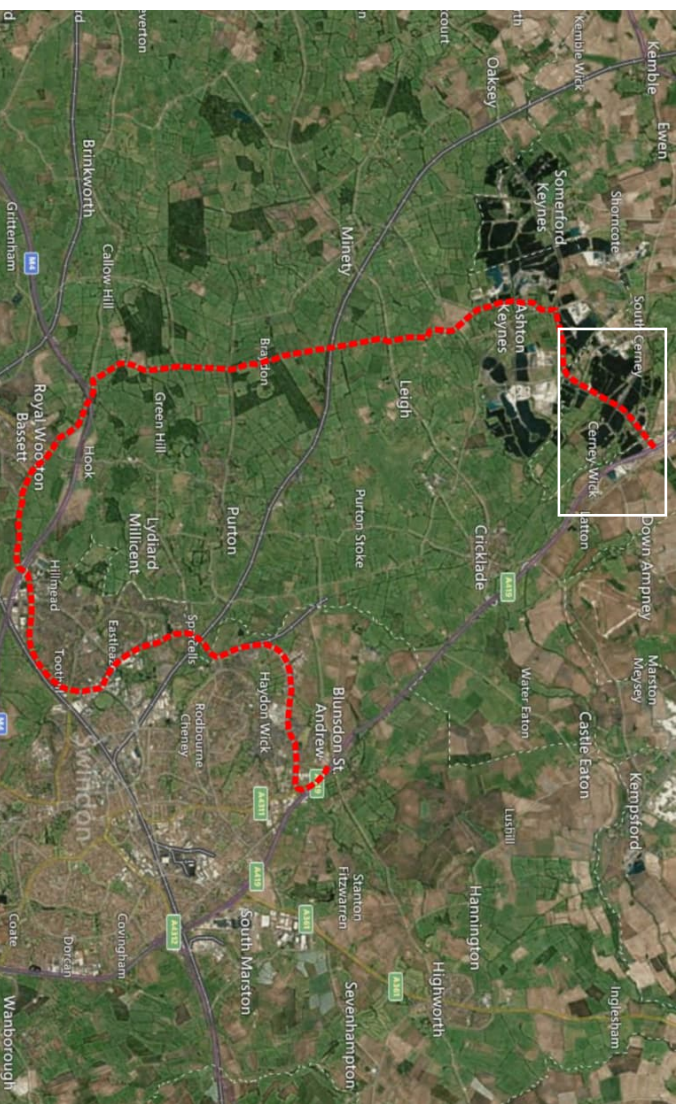
A419 SOUTHBOUND CLOSED BETWEEN SPINE ROAD JUNCTION AND LADY LANE JUNCTION

Diversion Route
Symbol



Action Points
 Step 1: Close A419 Southbound carriageway at Cerney Junction with B4696.
 Step 2: Open trigger signs at South Cerney Southbound Exit Slip Road.
 Reverse procedure at end of closure.

A419 Southbound carriageway at Cerney Junction with B4696.
 Standard Road Closure to TMC requirements



This route was agreed as the preferred option by the following parties during 2007:
 Highways Agency, R.M.S. Gloucestershire Police and Gloucester County Council

HA HIGHWAYS
 AGENCY

mouchel

Diversion Route 14 (Southbound)
 Aug 2024