

Update 11 July 2023

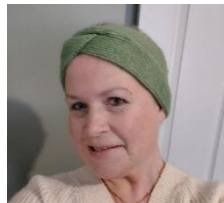
Radiotherapy Centre



Between 2015 and 2019 an incredible £2.9 million was donated to our Radiotherapy Appeal to help equip a new radiotherapy service for cancer patients diagnosed at Great Western Hospital.

Since opening in October 2022, the new OUH Radiotherapy Centre @ Swindon (above) has made an incredible difference to hundreds of patients who can now receive cancer care closer to home. To date 402 patients have received 4,519 radiotherapy treatments.

Patients like Claire (opposite) have told us about the positive impact this made to them.



“Being able to have radiotherapy in Swindon and not worry about parking or travelling all the way to Bath, made such a difference to me during my 3 weeks of daily treatment. I found radiotherapy treatment much more tiring than I expected and was grateful that I only had to travel for 10-15 minutes to get there. When you’re going through cancer it can be an anxious time. The new Centre was so calming and the friendly staff really made me feel at ease. Anything that make things easier really helps.”

Claire Brown, age 44

Thanks to additional generous donations, the Radiotherapy Centre also has a CT Scanner installed!



384 patients have already benefitted from being able to have their pre-treatment planning appointment and CT scan at the new centre instead of travelling to Oxford.

Meaningful Activities

It is important for our mental health that whenever possible we get dressed and out of bed. Unfortunately, we know that spending time in hospital can have a detrimental effect on patients’ ability to do this.

The Trust is working with health and social care students from Swindon College who are volunteering every week to support patients with meaningful activities which can help with their recovery.



Generous grants have allowed Brighter Futures to support this with the purchase of six ‘Meaningful Activity’ trolleys full of resources to help engage with patients. Patients are now able to enjoy activities such as bingo, playing cards, puzzles, dominos, arts and crafts and making music.

They have been a big hit on our wards!



Way Forward Appeal

Our new **Way Forward Appeal** supports the Trust's ambitious **Way Forward Programme** to create a hospital environment suitable for the people of Swindon and surrounding areas well into the future.

Our local population is growing significantly and patients' health needs are getting more complex. With demand increasing the hospital's Emergency Department designed for 48,000 attendances per year now regularly sees at least 80,000.

The first priority for the **Way Forward Programme** has been the 'right sizing' of the Urgent and Emergency Care services.

Last year the Trust built a brand **new Urgent Treatment Centre** (below) which is an extension to the main hospital.



The new building increases capacity from 8 to 23 consulting rooms and includes specialist areas for eye examinations, plastering and treatment. It also offers more space in both the adult and children's waiting areas.

At Christmas we asked supporters to help us enhance the Children's waiting room area in the new Urgent Treatment Centre.

Generous gifts, including many made and matched via the Big Give, enabled us to install these fantastic items of play and sensory equipment:

- 3 Wall Spinners
- 1 Crazy Mirror
- 2 Bubble Machines
- 1 RockinR Gaming Kart



This equipment offers distraction and relieves stress for children and their families meaning they will be calmer and less anxious when treated.

With 60 plus children visiting the newly opened Urgent Treatment Centre every day the new equipment is already making a significant impact.



"The gaming kart is great to keep my daughter occupied while she waits for her sibling to be seen. It's less stressful for parents particularly if you've got other children with you who are fine. It means you can pay more attention to the child who is unwell."
Hayley, Mum to two girls

New Emergency Department

Efforts are now focused on expanding the Emergency Department. When it opens in 2024, it will streamline and expand services to better meet the more complex needs of our expanding and ageing population.

Donations to the **Way Forward Appeal** will help create a welcoming and calm environment that meets the requirements of all patients, reduces anxiety and gives patients dignity.



Improvements in the new Emergency Department will include a mental health patient room, bereavement suite and a Children's Emergency Unit.

With our supporters help we also plan to purchase additional medical equipment for faster diagnostics, meaning better care and outcomes for patients.

Providing the best possible care is at the heart of everything we do and is only possible because of donations like those made by Chiseldon Parish Council. Thank you for all your support!

Brighter Futures, Great Western Hospital,
Marlborough Road, Swindon SN3 6BB
Tel 01793 605631

jane.leighton3@nhs.net

www.brighterfuturesgwh.nhs.uk

Brighter Futures is the registered charity (no 1050892) of Great Western Hospitals NHS Foundation Trust.

