

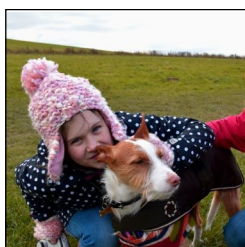
What's on at National Trust Avebury and the Wiltshire Landscape

Spring 2020

For further information, text, expert quotes and photographs please contact:

Abby George, Senior Marketing and Communications Officer on 01672 538035
or abby.george@nationaltrust.org.uk.

If you'd like to attend one of these events as a journalist please get in touch.



February half-term fun

Sat 15 Feb to Sun 23 Feb 11:00 - 17:00 (free with entry)

Families can discover what they might have needed to live in prehistoric Avebury with a free museum trail. At Avebury Manor, children can touch the displays, lie on the beds or dress up in the costumes.

Call 01672 538036 for details nationaltrust.org.uk/avebury



Build your own bird feeder, Avebury Chapel

Wed 19 Feb 10:30 - 12:30 and 13.30-15.30 £5 (booking essential)

Join the rangers for this family workshop to make bird feeders and discover the best ways to attract garden birds near your home.

Call 0344 249 1895 for details nationaltrust.org.uk/avebury



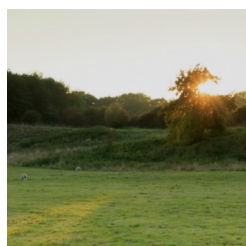
Avebury sky tour, Avebury Chapel

Thurs 27 Feb 19:00 - 21:00, Sat 21st March 19.30-21.30 £8 (children £5)

(booking essential)

Here's an opportunity to take part in a guided tour of the night sky around the ancient stone circles with astronomer Adrian West. Take in its wonders from this perfect stargazing location and discover how the view might have changed over thousands of years.

Call 0344 249 1895 for details nationaltrust.org.uk/avebury



Discover Durrington Walls, Stonehenge Landscape

Sat 7th, Wed 25th March 13:30 - 16:00 £8 (children free) (booking essential)

Have you ever wondered where the builders of Stonehenge lived? This 2.5 mile guided walk will explore 6,000 years of history at Durrington Walls.

Call 0344 249 1895 for details nationaltrust.org.uk/stonehenge-landscape

Continued

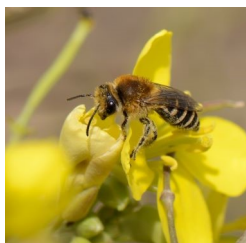


Dressing Mrs Williamson, Avebury Manor

Wed 11th March 14:00 - 14:30 (free with entry)

Why not head to the Dining Room at Avebury Manor for a half hour talk on Mrs Williamson? Discover who she was, why she was packing for Jamaica in the late eighteenth century and what the journey might have been like.

Call 01672 538036 for details nationaltrust.org.uk/avebury

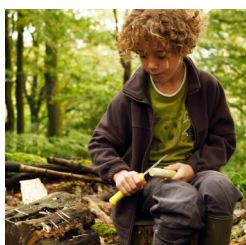


Lunchtime Lecture: Honey bees, Avebury Chapel

Thur 12th March 12:30 - 13:30 £10 (booking essential)

Join members of the Wiltshire Bee Centre at Avebury Chapel for a lively and informative talk on bee keeping and how you can help to support these important pollinators. Fiona Robinson of Wiltshire Bee Centre will be giving a talk on the topic: why the honey bee is in trouble and what you can do to help.

Call 0344 249 1895 for details nationaltrust.org.uk/avebury

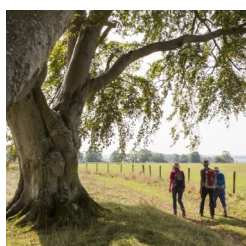


Family woodland activity day, Stonehenge Landscape

Sat 14 Mar 10:30 - 15:00 £10 (booking essential)

Try your hand at wood-crafting with the Stonehenge Landscape Ranger. This family event will involve using woodcraft tools to make various items.

Call 0344 249 1895 for nationaltrust.org.uk/stonehenge-landscape

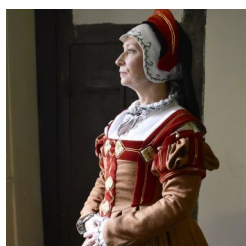


Spring archaeology walk, Stonehenge Landscape

Wed 18 Mar 14:00 - 17:00 £8 (children free) (booking essential)

The Stonehenge landscape is an intriguing place. This informative 4 mile guided walk will have you looking at the landscape with new eyes.

Call 0344 249 1895 for nationaltrust.org.uk/stonehenge-landscape



Dressing Mrs Dunch, Avebury Manor

Wed 25 Mar 14:00 - 15:00 (free with entry)

If you would like to learn how a Tudor lady dressed at Avebury Manor then join us to watch as 'Mrs Dunch's' outfit is built up from a linen chemise into a fine Tudor gown. There will be a talk as she is dressed describing each layer and it's purpose. Mrs Dunch lived here in around 1560.

Call 01672 538036 for details nationaltrust.org.uk/avebury



Gardener's question time, Avebury

Fri 27 Mar 14:00 - 15:00 (free with entry)

If you would like to chat to the Head Gardener, Simon Brooks, to discover more about Avebury Manor Garden or ask a question to solve a problem in your own garden, then pop along to one of these Q&A sessions.

Call 01672 538036 for details nationaltrust.org.uk/avebury

Continued



Dinton daffodil walk, Dinton Park

Sat 28 Mar 10:00 - 12:30 and 13.30-16.00 £8 (children free) (booking essential)

Daffodils are a quintessential image of spring. This 2-mile guided walk reveals the curious story of George Engleheart and his daffodils.

Call 0344 249 1895 for nationaltrust.org.uk/stonehenge-landscape



Landscape walk - Waden Hill circuit Avebury

Sun 29 Mar 13:30 - 16:00 £8 (booking essential)

The Waden Hill circuit takes in some of the Neolithic monuments which make up this ancient and intriguing landscape. The National Trust guide will help you to unlock the past by explaining the history of the landscape as you walk.

Call 0344 249 1895 for details nationaltrust.org.uk/Avebury



The Wiltshire Landscape Walking Challenge

Twelve spectacular locations in Wiltshire Jan – Dec, £12, booking essential

If you love the outdoors, enjoy seeing nature and exploring the historical landscapes of Wiltshire, then the walking challenges are for you. There are two to choose from, both will take you to some of the special places our Wiltshire Landscape team look after, for ever - for everyone.

Call 0344 249 1895 for details nationaltrust.org.uk/stonehenge-landscape



The Stonehenge and Avebury Walking Challenge

Jan - Dec £10, booking essential.

Explore the Stonehenge and Avebury World Heritage Site - challenge yourself, embrace health and feed your curiosity on these 8 self led walks. Walk in the footsteps of our ancestors in this iconic landscape; rich in archaeology and supporting a wealth of wildlife and plants.

Call 0344 249 1895 for details nationaltrust.org.uk/avebury



'Still digging ...' exhibition on the last 20 years of excavation at Avebury

Free with entry to the Alexander Keiller Museum

This exhibition gives an added dimension to your visit to the museum, explaining a little more about the more recent discoveries and ongoing research into the story of this fascinating landscape. **nationaltrust.org.uk/Avebury**



Alexander Keiller's Avebury Manor

Free with entry to Avebury Manor

Discover how Avebury Manor looked during the years it was owned by the excavator of Avebury stone circles, Alexander Keiller.

Highlights for the Easter holidays

Celebrate Easter and have fun as you follow the spring themed Cadbury Easter Egg Trail to win a delicious chocolate prize at Avebury Manor. Sat 4 Apr to Sun 19 Apr.

50 things spring activities in the Old Farmyard, Avebury Fri 10 Apr to Mon 13 Apr.

www.nationaltrust.org.uk/avebury