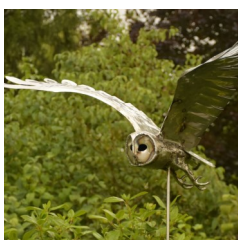


What's on at National Trust Avebury and the Wiltshire Landscape

October 2019

For further information, text, expert quotes and photographs please contact:

Abby George, Senior Marketing and Communications Officer on 01672 538035 or abby.george@nationaltrust.org.uk.



Explore sculpture in Avebury Manor garden For art lovers

7 Sep - 13 Oct, 11am-5pm, free with entry

This outdoor art and sculpture exhibition showcases work by different artists. Tucked away in the nooks and crannies of the garden rooms, each corner turned will reveal a work of art. Including glassworks, bronzes, ceramics and wood, many are for sale if you wish to take one home.

Call 01672 538036 for details nationaltrust.org.uk/Avebury



Autumn archaeology walk Stonehenge Landscape

5 & 19 Oct, 1pm-4pm, adult: £8, (children free), booking essential

The National Trust Stonehenge Landscape is an intriguing place, with many of its secrets still lying tantalizingly below ground. This informative 4 mile afternoon walk with an expert guide will have you looking at this landscape with new eyes.

Call 0344 249 1895 for details nationaltrust.org.uk/stonehenge-landscape



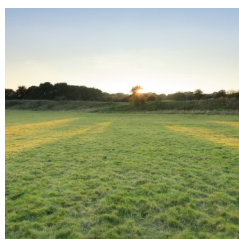
Walk with an archaeologist through the Stonehenge landscape

Stonehenge Landscape

9 Oct, 10am-1pm, £18 adult, £5 child, booking essential

Join Neolithic expert and National Trust archaeologist, Dr Nick Snashall, on this half day exploration of the Stonehenge Landscape and find out about the latest exciting discoveries. We'll be walking around 4 miles.

Call 0344 249 1895 for details nationaltrust.org.uk/stonehenge-landscape



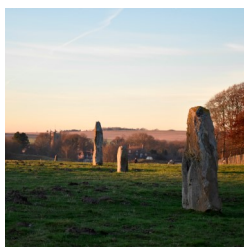
Discover Durrington Walls, Stonehenge Landscape

12 & 23 Oct 1.30pm-4pm, £8 (children free), booking essential

Though peaceful today, thousands of years ago Durrington Walls was alive with the sounds and smells of a bustling community of hundreds of people, living their lives, holding festivals and acting as the workforce for the building of Stonehenge. Our expert guide will take you on a 3 mile walk to explore Durrington Walls and discover 6,000 years of hidden history.

Call 0344 249 1895 for details nationaltrust.org.uk/stonehenge-landscape

Continued



Join a guided walk of prehistoric Avebury The 'East of Avebury' circuit

13 Oct, 1.30-4pm, £8 per person, booking essential

The National Trust guide will explain all about the prehistory of this special place as you leave the stone circle, walking eastwards towards the Ridgeway giving you time to explore prehistoric round barrows before returning to Avebury along West Kennet Avenue.

Call 0344 249 1895 for details nationaltrust.org.uk/Avebury

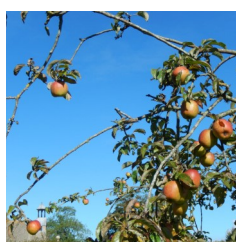


Graft your own apple tree at Avebury Manor Garden

17 Oct, 10am-12.30pm, £18, booking essential

Join us in the Orchard at Avebury for an apple grafting workshop. Learn from Head Gardener, Simon Brooks and soak up expert knowledge, ideas and techniques. During this workshop you'll learn about the technique of grafting and practise this on some plant material. After the workshop you'll be given a grafted apple tree to take home as a memento of your experience.

Call 0344 249 1895 for details nationaltrust.org.uk/Avebury



Celebrate the apple season at Avebury Avebury Manor garden

19 & 20 Oct, 11am-3pm, free with entry

Why not visit Avebury and celebrate the apple harvest with us? We will be paying homage to this special fruit with apple tastings, apple pressing and children's activities in the orchard. You can also chat to our gardeners and get helpful tips about caring for your own apple trees. Some crafts have a small charge to cover the cost of materials.

Call 01672 538036 for details nationaltrust.org.uk/Avebury



Ask the gardener in Avebury Manor Garden, Monks Garden

25 Oct 2-3pm free with entry

Our gardeners at Avebury Manor have many years of experience behind them. Here is an opportunity to have a face-to-face chat with one of them to discover more about the manor garden or to ask a question to solve a problem in your own garden.

Call 01672 538036 for details nationaltrust.org.uk/avebury

Continued



Have half-term fun at Avebury Fun family trail in the Old Farmyard

26 Oct - 3 Nov, 11am-3pm, trail £2, crafts have a small charge.

Avebury has a real sense of mystery at this time of the year; the monuments keep their secrets and the lives of people long past echo through the ages. Children can follow a trail to win a prize and you can visit Avebury Manor to discover how beliefs and superstitions influenced the people who once lived here.

Call 01672 538036 for details nationaltrust.org.uk/Avebury



Trust 10

27 Oct, 8.30am (9am start), outside the Coach House Cafe, High Street, Avebury

Join us on the 4th Sunday of every month for our free 10k trail run in partnership with Cotswold Outdoor. This is a challenging run, with steep climbs and rough terrain. You'll be rewarded with stunning views over this iconic prehistoric landscape which will leave you feeling spiritually and physically refreshed. Why not reward yourself afterwards with breakfast in the National Trust café?

Call 01672 538036 for details nationaltrust.org.uk/running



On the trail of Beowulf in the Stonehenge Landscape An Anglo Saxon story walk for children

29 Oct, 2pm-5pm, Adult: £7.50, Child: £3.50, booking essential

Experience this exciting walk with storyteller Lizzie Bryant as she shares the ancient tale of the Anglo Saxon warrior, Beowulf. Afterwards there'll be a warm fire, hot mulled apple juice and marshmallow toasting.

Call 0344 249 1895 for details nationaltrust.org.uk/Stonehenge-landscape



Join the Wiltshire Landscape Walking Challenge

Twelve spectacular locations in Wiltshire Jan – Dec 2019, £12, booking essential

These varied walks will give you the chance to explore this beautiful county at your own pace, taking you to special places, rich in archaeology, wildlife and breath-taking views. Complete them all by 31 Dec to enter a prize draw for a chance to win a £300 Cotswold Outdoor voucher. **Call 0344 249 1895 for details nationaltrust.org.uk/avebury**

Continued



Join the Stonehenge and Avebury Walking Challenge

Jan - Dec 2019, £10, booking essential.

Walking all around the World Heritage Site. Through a series of eight walks you can explore the two iconic landscapes that make up the Stonehenge and Avebury World Heritage Site. Globally significant for the exceptional preservation of its Neolithic and Bronze Age archaeology you'll have the chance to see many aspects of these extraordinary places. **Call 0344 249 1895 for details nationaltrust.org.uk/avebury**



'Still digging ...' an exhibition on the last 20 years of excavation at Avebury

Free with entry to the Alexander Keiller Museum

This exhibition gives an added dimension to your visit to the museum, explaining a little more about the more recent discoveries and ongoing research into the story of this fascinating landscape. **nationaltrust.org.uk/avebury**

Coming next month

Walk the route of the sacred Samhain Festival procession (2 Nov).

Autumn Archaeology walk Stonehenge Landscape (9, 27 Nov).

Christmas traditions at Avebury (23 Nov—5 Jan)

For further information, text, expert quotes and photographs please contact :
Abby George, Senior Marketing and Communications Officer on 01672 538035 or
abby.george@nationaltrust.org.uk.