

What's on at National Trust Avebury and the Wiltshire Landscape

September 2019



Dressing Mrs Dunch at Avebury Manor

4 Sep 2-3pm, free with entry to Avebury Manor

Learn how a Tudor lady dressed. In the Tudor parlour you can watch as 'Mrs Dunch' is dressed and her outfit built up from a linen chemise into a fine Tudor gown. There will be a talk as she is dressed describing each layer and its purpose. Mrs Dunch was the wife of the first owner of Avebury Manor and lived here in around 1560.

Call 01672 538036 for details, nationaltrust.org.uk/avebury

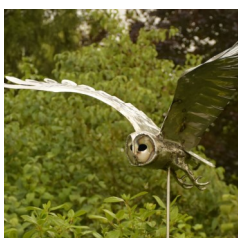


Summer archaeology walk Stonehenge Landscape

7 Sep and 18 Sep, 2-5pm, £8 (children free), booking essential

The National Trust Stonehenge Landscape is an intriguing place, with many of its secrets still lying tantalisingly below ground. This informative 4 mile afternoon walk with an expert guide will have you looking at this landscape with new eyes. You'll visit ancient earthworks including the Cursus, Stonehenge Avenue and some of the many and varied barrows.

Call 0344 249 1895 for details nationaltrust.org.uk/stonehenge-landscape



Explore sculpture in Avebury Manor garden For art lovers

7 Sep - 13 Oct, 11am-5pm, free with entry

This outdoor art and sculpture exhibition showcases work by different artists. Tucked away in the nooks and crannies of the garden rooms, each corner turned will reveal a work of art. Including glassworks, bronzes, ceramics and wood, many are for sale if you wish to take one home.

Call 01672 538036 for details nationaltrust.org.uk/Avebury

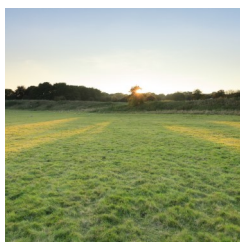


Guided walk of Neolithic Avebury – Waden Hill

10 Sep 1.30pm-4pm, £8, booking essential

Mysterious mounds and processional avenues, this guided walk takes in some of the Neolithic monuments which make up this intriguing landscape including Silbury Hill and West Kennet Avenue. Our National Trust guide will explain the history of the landscape as you walk. Call 0344 249 1895 for details, nationaltrust.org.uk/avebury

Continued



Discover Durrington Walls, Stonehenge Landscape

11 Sep and 28 Sep, 1.30pm-4pm, £8 (children free), booking essential

Though peaceful today, thousands of years ago Durrington Walls was alive with the sounds and smells of a bustling community of hundreds of people, living their lives,

holding festivals and acting as the workforce for the building of Stonehenge. Our expert guide will take you on a 3 mile walk to explore Durrington Walls and discover 6,000 years of hidden history.

Call 0344 249 1895 for details nationaltrust.org.uk/stonehenge-landscape



Tobiah in concert

14 September, 7.30pm—9.30pm, £22

Join us as we welcome acclaimed singer songwriter Tobiah for an uplifting evening of songs and stories from her new album *Are We Angels*. This will be a magical evening of feel-good songs and stories with foot-tapping jigs and reels in the stunning setting of Avebury Chapel in the heart of the stone circle.



Heritage Open Day

15 September, 11am—5pm, free

To celebrate Heritage Open day we are offering free entry to the Alexander Keiller Museum, there are wonderful displays of archaeological finds from the area, interactive displays and a children's activity area.

There are also free guided tours of the stone circles and in Avebury Chapel there will be displays of historical maps and an opportunity to 'meet the ranger' to find out all about the Wiltshire Landscape. You can even visit the sculpture exhibition in Avebury Manor Garden.

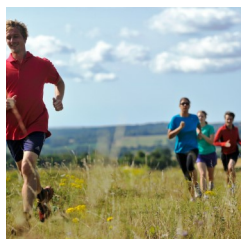


Autumn foraging walk—discover nature's wild food

21 Sep, 10.30am-2.30pm £50, booking essential

Discover some wild food secrets on this half-day foraging walk. As you walk through the Avebury landscape, Fred will teach you how to identify the edible plants growing in our hedgerows, fields and woods. You'll also be able to taste some of nature's harvest which at this time of year can include parasol mushrooms, clover blossoms and nettle seeds.

Call 0344 249 1895 for details nationaltrust.org.uk/Avebury



Trust 10

22 Sep, 8.30am (9am start), outside the Coach House Cafe, High Street, Avebury

Join us on the 4th Sunday of every month for our free 10k trail run in partnership with Cotswold Outdoor. This is a challenging run, with steep climbs and rough terrain.

Call 01672 538036 for details nationaltrust.org.uk/running

Continued



Join the Wiltshire Landscape Walking Challenge

Twelve spectacular locations in Wiltshire Jan – Dec 2019, £12, booking essential

These varied walks will give you the chance to explore this beautiful county at your own pace, taking you to special places, rich in archaeology, wildlife and breath-taking views. Complete them all by 31 Dec to enter a prize draw for a chance to win a £300 Cotswold Outdoor voucher. **Call 0344 249 1895 for details nationaltrust.org.uk/avebury**



Join the Stonehenge and Avebury Walking Challenge

Jan - Dec 2019, £10, booking essential.

Walking all around the World Heritage Site. Through a series of eight walks you can explore the two iconic landscapes that make up the Stonehenge and Avebury World Heritage Site. Globally significant for the exceptional preservation of its Neolithic and Bronze Age archaeology you'll have the chance to see many aspects of these extraordinary places. **Call 0344 249 1895 for details nationaltrust.org.uk/avebury**



'Still digging ...' an exhibition on the last 20 years of excavation at Avebury

Free with entry to the Alexander Keiller Museum

This exhibition gives an added dimension to your visit to the museum, explaining a little more about the more recent discoveries and ongoing research into the story of this fascinating landscape. **nationaltrust.org.uk/avebury**

For further information, text, expert quotes and photographs please contact :
Abby George, Senior Marketing and Communications Officer on 01672 538035 or abby.george@nationaltrust.org.uk.

If you'd like to attend one of these events as a journalist please get in touch..