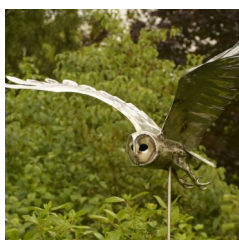


# What's on at National Trust Avebury and the Wiltshire Landscape

October 2019



## Explore sculpture in Avebury Manor garden For art lovers

*7 Sep - 13 Oct, 11am-5pm, free with entry*

This outdoor art and sculpture exhibition showcases work by different artists. Tucked away in the nooks and crannies of the garden rooms, each corner turned will reveal a work of art. Including glassworks, bronzes, ceramics and wood, many are for sale if you wish to take one home.

Call 01672 538036 for details [nationaltrust.org.uk/Avebury](http://nationaltrust.org.uk/Avebury)



## Autumn archaeology walk Stonehenge Landscape

*5 & 19 Oct, 1pm-4pm, adult: £8, (children free), booking essential*

The National Trust Stonehenge Landscape is an intriguing place, with many of its secrets still lying tantalizingly below ground. This informative 4 mile afternoon walk with an expert guide will have you looking at this landscape with new eyes.

Call 0344 249 1895 for details [nationaltrust.org.uk/Stonehenge-landscape](http://nationaltrust.org.uk/Stonehenge-landscape)

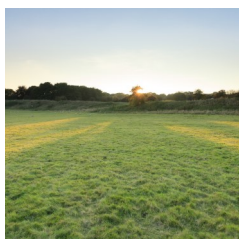


## Walk with an archaeologist through the Stonehenge landscape Stonehenge Landscape

*9 Oct, 10am-1pm, £18 adult, £5 child, booking essential*

Join Neolithic expert and National Trust archaeologist, Dr Nick Snashall, on this half day exploration of the Stonehenge Landscape and find out about the latest exciting discoveries. We'll be walking around 4 miles.

Call 0344 249 1895 for details [nationaltrust.org.uk/Stonehenge-landscape](http://nationaltrust.org.uk/Stonehenge-landscape)



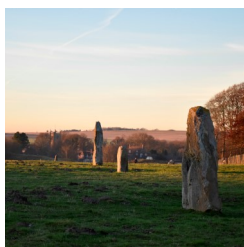
## Discover Durrington Walls, Stonehenge Landscape

*12 & 23 Oct 1.30pm-4pm, £8 (children free), booking essential*

Though peaceful today, thousands of years ago Durrington Walls was alive with the sounds and smells of a bustling community of hundreds of people, living their lives, holding festivals and acting as the workforce for the building of Stonehenge. Our expert guide will take you on a 3 mile walk to explore Durrington Walls and discover 6,000 years of hidden history.

Call 0344 249 1895 for details [nationaltrust.org.uk/stonehenge-landscape](http://nationaltrust.org.uk/stonehenge-landscape)

*Continued*



## **Join a guided walk of prehistoric Avebury The 'East of Avebury' circuit**

*13 Oct, 1.30-4pm, £8 per person, booking essential*

The National Trust guide will explain all about the prehistory of this special place as you leave the stone circle, walking eastwards towards the Ridgeway giving you time to explore prehistoric round barrows before returning to Avebury along West Kennet Avenue.

**Call 0344 249 1895 for details [nationaltrust.org.uk/Avebury](https://nationaltrust.org.uk/Avebury)**



## **Dressing Mrs Dunch at Avebury Manor Learn how a Tudor lady dressed**

*16 Oct, 2-3pm, free with entry*

In the Tudor parlour you can watch as 'Mrs Dunch' is dressed and her outfit built up from a linen chemise into a fine Tudor gown. There will be a talk as she is dressed describing each layer and its purpose. Mrs Dunch was the wife of the first owner of Avebury Manor and lived here in around 1560.

**Call 01672 538036 for details [nationaltrust.org.uk/avebury](https://nationaltrust.org.uk/avebury)**



## **Graft your own apple tree at Avebury Manor Garden**

*17 Oct, 10am-12.30pm, £18, booking essential*

Join us in the Orchard at Avebury for an apple grafting workshop. Learn from Head Gardener, Simon Brooks and soak up expert knowledge, ideas and techniques. During this workshop you'll learn about the technique of grafting and practise this on some plant material. After the workshop you'll be given a grafted apple tree to take home as a memento of your experience.

**Call 0344 249 1895 for details [nationaltrust.org.uk/Avebury](https://nationaltrust.org.uk/Avebury)**



## **Celebrate the apple season at Avebury Avebury Manor garden**

*19 & 20 Oct, 11am-3pm, free with entry*

Why not visit Avebury and celebrate the apple harvest with us? We will be paying homage to this special fruit with apple tastings, apple pressing and children's activities in the orchard. You can also chat to our gardeners and get helpful tips about caring for your own apple trees. Some crafts have a small charge to cover the cost of materials.

**Call 01672 538036 for details [nationaltrust.org.uk/Avebury](https://nationaltrust.org.uk/Avebury)**

***Continued***



## **Ask the gardener in Avebury Manor Garden, Monks Garden**

*25 Oct 2-3pm free with entry*

Our gardeners at Avebury Manor have many years of experience behind them. Here is an opportunity to have a face-to-face chat with one of them to discover more about the manor garden or to ask a question to solve a problem in your own garden.

**Call 01672 538036 for details [nationaltrust.org.uk/avebury](https://nationaltrust.org.uk/avebury)**

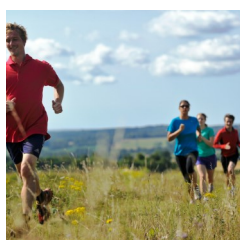


## **Have half-term fun at Avebury Fun family trail in the Old Farmyard**

*26 Oct - 3 Nov, 11am-3pm, trail £2, crafts have a small charge.*

Avebury has a real sense of mystery at this time of the year; the monuments keep their secrets and the lives of people long past echo through the ages. Children can follow a trail to win a prize and you can visit Avebury Manor to discover how beliefs and superstitions influenced the people who once lived here.

**Call 01672 538036 for details [nationaltrust.org.uk/Avebury](https://nationaltrust.org.uk/Avebury)**



## **Trust 10**

*27 Oct, 8.30am (9am start), outside the Coach House Cafe, High Street, Avebury*

Join us on the 4th Sunday of every month for our free 10k trail run in partnership with Cotswold Outdoor. This is a challenging run, with steep climbs and rough terrain. You'll be rewarded with stunning views over this iconic prehistoric landscape which will leave you feeling spiritually and physically refreshed. Why not reward yourself afterwards with breakfast in the National Trust café?

**Call 01672 538036 for details [nationaltrust.org.uk/running](https://nationaltrust.org.uk/running)**



## **On the trail of Beowulf in the Stonehenge Landscape An Anglo Saxon story walk for children**

*29 Oct, 2pm-5pm, Adult: £7.50, Child: £3.50, booking essential*

Experience this exciting walk with storyteller Lizzie Bryant as she shares the ancient tale of the Anglo Saxon warrior, Beowulf. Afterwards there'll be a warm fire, hot mulled apple juice and marshmallow toasting.

**Call 0344 249 1895 for details [nationaltrust.org.uk/Stonehenge-landscape](https://nationaltrust.org.uk/Stonehenge-landscape)**

***Continued***



## Join the Wiltshire Landscape Walking Challenge

*Twelve spectacular locations in Wiltshire Jan – Dec 2019, £12, booking essential*

These varied walks will give you the chance to explore this beautiful county at your own pace, taking you to special places, rich in archaeology, wildlife and breath-taking views. Complete them all by 31 Dec to enter a prize draw for a chance to win a £300 Cotswold Outdoor voucher. **Call 0344 249 1895 for details [nationaltrust.org.uk/avebury](http://nationaltrust.org.uk/avebury)**



## Join the Stonehenge and Avebury Walking Challenge

*Jan - Dec 2019, £10, booking essential.*

Walking all around the World Heritage Site. Through a series of eight walks you can explore the two iconic landscapes that make up the Stonehenge and Avebury World Heritage Site. Globally significant for the exceptional preservation of its Neolithic and Bronze Age archaeology you'll have the chance to see many aspects of these extraordinary places. **Call 0344 249 1895 for details [nationaltrust.org.uk/avebury](http://nationaltrust.org.uk/avebury)**



## 'Still digging ...' an exhibition on the last 20 years of excavation at Avebury

*Free with entry to the Alexander Keiller Museum*

This exhibition gives an added dimension to your visit to the museum, explaining a little more about the more recent discoveries and ongoing research into the story of this fascinating landscape. **[nationaltrust.org.uk/avebury](http://nationaltrust.org.uk/avebury)**

### *Coming next month ....*

**Walk the route of the sacred Samhain Festival procession (2 Nov).**

**Autumn Archaeology walk Stonehenge Landscape (9, 27 Nov).**

**Christmas traditions at Avebury (23 Nov—5 Jan)**

For further information, text, expert quotes and photographs please contact :  
Abby George, Senior Marketing and Communications Officer on 01672 538035 or  
[abby.george@nationaltrust.org.uk](mailto:abby.george@nationaltrust.org.uk).