

What's on at National Trust Avebury and the Wiltshire Landscape

July 2019

For further information, text, expert quotes and photographs please contact:

Abby George, Senior Marketing and Communications Officer on 01672 538035 or abby.george@nationaltrust.org.uk.

If you'd like to attend one of these events as a journalist please get in touch.



Walk with an archaeologist at Avebury, Avebury landscape

4 Jul, 10am-2.30pm, £30, booking essential

Follow in the footsteps of our ancestors on this half-day walk in the prehistoric landscape of Avebury, with National Trust archaeologist, Dr Nick Snashall. Nick will explain all about the archaeology of this globally important site and afterwards you can join her for a light lunch at Avebury (included in the price). **Call 0344 249 1895 for details, nationaltrust.org.uk/Avebury**

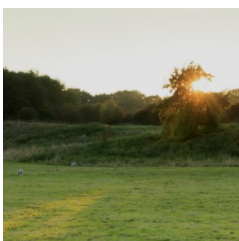


Relax with yoga on the lawn Avebury Manor garden

6, 13 & 20 Jul, 9.45-11am, £12, booking essential

Unwind in the tranquil and secluded setting of Avebury Manor Garden as you take part in a rejuvenating outdoor yoga session with local instructors Cheryl Parr or Emma Petitt.

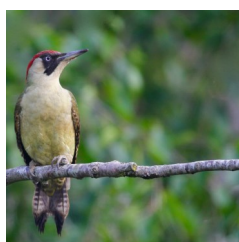
Call 0344 249 1895 for details nationaltrust.org.uk/Avebury



Discover Durrington Walls Stonehenge Landscape

10 Jul, 1.30pm-4pm, £8 (children free), booking essential

Though peaceful today, thousands of years ago Durrington Walls was alive with the sounds and smells of a bustling community of hundreds of people, living their lives, holding festivals and acting as the workforce for the building of Stonehenge. Our expert guide will take you on a 3 mile walk to explore Durrington Walls and discover 6,000 years of hidden history. **Call 0344 249 1895 for details nationaltrust.org.uk/Stonehenge-landscape**



Stonehenge Wildlife Walk and Picnic Stonehenge Landscape

13 July, 11.00am-2.00pm, £5, children free, booking essential

Join the National Trust Ranger on a 3½ mile wildlife walk in this beautiful ancient landscape. You'll hear the distinctive sound of the lark ascending and may see hedgerow birds such as yellowhammer and corn bunting. Large areas of restored chalk grassland attract butterflies such as the common blue. We'll stop for a relaxed picnic by the Bronze Age barrows at King Barrow Ridge and maybe lucky enough to see a woodpecker in the veteran beech trees.

Call 0344 249 1895 for details nationaltrust.org.uk/Stonehenge-landscape

Continued



Summer foraging walk—discover nature's wild food with forager, Fred Gillam

14 Jul 12.30-4.30pm, £50, booking essential

Discover some wild food secrets on this half-day foraging course. As you walk through the Avebury landscape, Fred will teach you how to identify the edible plants growing in our hedgerows. You'll also be able to taste some of nature's harvest including plantain seed, dressed chickweed and lime leaf salad. **Call 0344 249 1895 for details, nationaltrust.org.uk/avebury**



Summer archaeology walk Stonehenge Landscape

24 Jul, 2-5pm, £8 (children free), booking essential

The National Trust Stonehenge Landscape is an intriguing place, with many of its secrets still lying tantalisingly below ground. This informative 4 mile afternoon walk with an expert guide will have you looking at this landscape with new eyes. You'll visit ancient earthworks including the Cursus, Stonehenge Avenue and some of the many and varied barrows.

Call 0344 249 1895 for details nationaltrust.org.uk/Stonehenge-landscape

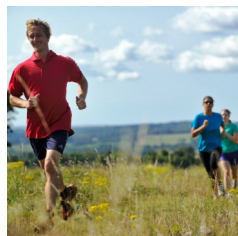


Ask the gardener in Avebury Manor garden

26 July Monk's Garden, 2-3pm, free with entry

Our gardeners at Avebury Manor have many years of experience behind them. Here is an opportunity to have a face-to-face chat with one of them to discover more about the manor garden or to ask a question to solve a problem in your own garden.

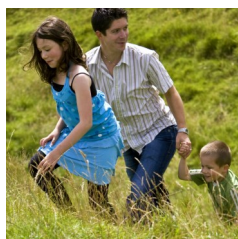
Call 01672 538036 for details nationaltrust.org.uk/avebury



Trust 10

28 July 8.30am (9am start), outside the Coach House Cafe, High Street, Avebury

Join us on the 4th Sunday of every month for our free 10k trail run in partnership with Cotswold Outdoor. This is a challenging run, with steep climbs and rough terrain. You'll be rewarded with stunning views over this iconic prehistoric landscape which will leave you feeling spiritually and physically refreshed. Why not reward yourself afterwards with breakfast in the National Trust café? **Call 01672 538036 for details, nationaltrust.org.uk/avebury**



Join in a summer of play at Avebury There's something going on every day

27 Jul - 1 Sep, 11am-5pm

As well as visiting Avebury Manor to immerse yourself in the lives of the people who lived here, you can join in with the teddy bear discovery trail, play with the family games in the Old Farmyard and Church Garden or explore the Neolithic stone circles. There's a family booklet available to help you find fun things to do all over the site (suggested donation £1). **Call 01672 538036 for details nationaltrust.org.uk/Avebury**

Continued



Join the teddy bear picnic at Avebury, Avebury Manor garden

27 & 28 Jul, 12.30-1.30pm, free with entry

Bring along your favourite teddy bear and your sandwiches to Avebury for a family picnic. You can relax in the Church Garden with picnic blankets and games and listen to the teddy bear themed story hour. There are other teddy adventures over the summer holidays, see the website for details. **Call 01672 538036 for details**

nationaltrust.org.uk/avebury



Stretch out with a children's yoga session at Avebury, Avebury Manor garden

29 Jul, 1.30- 3.30pm (25 min sessions every half hour), free with entry.

Join in with one of the free, drop-in yoga sessions for children. Parents can get involved too! Have fun burning off some energy, trying out yoga animal shapes and experimenting with some balancing. Suitable for 4-13 years. **Call 01672 538036 for details**

nationaltrust.org.uk/Avebury



Become a digger at archaeology afternoons at Avebury Alexander Keiller Museum

30 Jul, 1-4pm, free with entry (timed ticket)

Have you ever wondered what it would be like to be an archaeologist? You can have a go at uncovering a replica Beaker burial and West Kennet Long Barrow burial. These hands-on children's activities are a great way to spend the afternoon and discover more about Avebury. **Call 01672 538036 for details nationaltrust.org.uk/Avebury**



Curate your own museum at Avebury Alexander Keiller Museum

31 Jul, 1-4pm, free with entry (timed ticket)

Curate your own miniature museum display using objects we've found or something you've brought along with you. Decide how to display these objects and what you'd like to say about them. **Call 01672 538036 for details nationaltrust.org.uk/Avebury**



Celebrate World Ranger Day at Dinton Park Find out what a ranger does at this fun family day out.

31 Jul, 10am-4pm, £10 per child (adults free), booking essential

Children will have great fun undertaking tasks and activities to get their Ranger's Passport, such as whizzing down a zip wire, cooking on a campfire, building dens, making homes for wildlife and more. They can even book a tree climbing adventure (extra charge – find out how to book on the website). **Call 0344 249 1895 for details**

nationaltrust.org.uk/dinton-park-and-philipps-house

Continued



Join the Wiltshire Landscape Walking Challenge

Twelve spectacular locations in Wiltshire Jan – Dec 2019, £12, booking essential

These varied walks will give you the chance to explore this beautiful county at your own pace, taking you to special places, rich in archaeology, wildlife and breath-taking views. Complete them all by 31 Dec to enter a prize draw for a chance to win a £300 Cotswold Outdoor voucher. **Call 0344 249 1895 for details [national-trust.org.uk/avebury](https://nationaltrust.org.uk/avebury)**



Join the Stonehenge and Avebury Walking Challenge

Jan - Dec 2019, £10, booking essential.

Walking all around the World Heritage Site. Through a series of eight walks you can explore the two iconic landscapes that make up the Stonehenge and Avebury World Heritage Site. Globally significant for the exceptional preservation of its Neolithic and Bronze Age archaeology you'll have the chance to see many aspects of these extraordinary places. **Call 0344 249 1895 for details, [national-trust.org.uk/avebury](https://nationaltrust.org.uk/avebury)**



‘Still digging ...’ an exhibition on the last 20 years of excavation at Avebury

Free with entry to the Alexander Keiller Museum

This exhibition gives an added dimension to your visit to the museum, explaining a little more about the more recent discoveries and ongoing research into the story of this fascinating landscape. **nationaltrust.org.uk/avebury**

For further information, text, expert quotes and photographs please contact : Abby George, Senior Marketing and Communications Officer on 01672 538035 or abby.george@nationaltrust.org.uk.

If you'd like to attend one of these events as a journalist please get in touch.